



Certificate of Analysis

Oct 04, 2019 | CURALEAF FLORIDA LLC

19000 SW 192 STREET
MIAMI, FL, 33187, US



Sample: DA90927008-004

Harvest/Lot ID: TVF0926201901

Cultivation Facility: Miami Cultivation

Processing Facility : Homestead Processing

Seed to Sale #5530 1392 2723 4643

Batch Date : N/A

Batch#: TVF0926201901

Sample Size Received: 7.0 gram

Total Weight/Volume: 2000 gram

Retail Product Size: 60 gram gram

Ordered : 09/27/19

sampled : 09/27/19

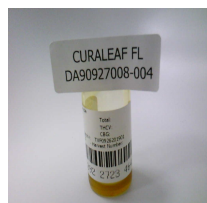
Completed: 10/04/19

Sampling Method: SOP Client Method

PASSED

Page 1 of 5

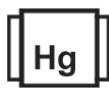
PRODUCT IMAGE



SAFETY RESULTS



Pesticides
PASSED



Heavy Metals
PASSED



Microbials
PASSED



Mycotoxins
PASSED



Residuals
Solvents
PASSED



Filtration
PASSED



Water Activity
NOT TESTED



Moisture
NOT TESTED



Terpenes
TESTED

MISC.

CANNABINOID RESULTS



Total THC

84.321%

THC/Container : 421.61 mg



Total CBD

1.243%

CBD/Container : 6.22 mg



Total Cannabinoids

0.000%

Total Cannabinoids / Container
: 0.000

	D9-THC	THCA	CBD	CBDa	CBN	CBDV	D8-THC	THCV	CBG	CBGA	CBC	TOTAL TH	TOTAL CB
%	84.3210	ND	1.1510	0.1050	0.5230	ND	0.1630	0.3990	1.6990	ND	1.0960	84.3210	1.2430
mg/g	843.2100	ND	11.5100	1.0500	5.2300	ND	1.6299	3.9900	16.9899	ND	10.9600	843.2100	12.4300
LOD	0.0010	0.0010	0.0010	0.0010	0.0010	0.0010	0.0010	0.0010	0.0010	0.0010	0.0010	0.0010	0.0010
%	%	%	%	%	%	%	%	%	%	%	%	%	%

	Filtration	
	PASSED	

Analyzed By	Weight	Extraction date	Extracted By
s3	1g	NA	NA
Analyte	LOD	Batch Date	Result
Filtration and Foreign Material	0		ND
Analysis Method -SOP.T.40.013			
Analytical Batch -DA006744			
Instrument Used :			

This includes but is not limited to hair, insects, feces, packaging contaminants, and manufacturing waste and by-products. An SH-2B/T Stereo Microscope is used for inspection.

Cannabinoid Profile Test

Analyzed by	Weight	Extraction date :	Extracted By :
372	0.1104g	09/30/19 05:09:28	574
Analysis Method	Instrument Used :	Batch Date :	
-SOP.T.40.020, SOP.T.30.050			
Analytical Batch -DA006760			
Reagent	Dilution	Consums. ID	
092719.R07	400	76124-662	
093019.R03		SFM-BK-1025	
092719.R09		923C4-923AK	
092719.R06		910C6 - 910H	

Full spectrum cannabinoid analysis utilizing High Performance Liquid Chromatography with UV detection (HPLC-UV). (Method: SOP.T.30.050 for sample prep and Shimadzu High Sensitivity Method SOP.T.40.020 for analysis. LOQ for all cannabinoids is 1 mg/L).

This report shall not be reproduced, unless in its entirety, without written approval from Kaycha Labs. This report is an Kaycha Labs certification. The results relate only to the material or product analyzed. Test results are confidential unless explicitly waived otherwise. Void after 1 year from test end date. Cannabinoid content of batch material may vary depending on sampling error. IC=In-control QC parameter, NC=Non-controlled QC parameter, ND=Not Detected, NA=Not Analyzed, ppm=Parts Per Million, ppb=Parts Per Billion. Limit of Detection (LoD) and Limit Of Quantitation (LoQ) are terms used to describe the smallest concentration that can be reliably measured by an analytical procedure. RPD=Reproducibility of two measurements. Action Levels are State determined thresholds for human safety for consumption and/or inhalation. The result >99% are variable based on uncertainty of measurement (UM) for the analyte. The UM error is available from the lab upon request. The "Decision Rule" for the pass/fail does not include the UM. The limits are based on F.S. Rule 64-4.310.

Jorge Segredo
Lab Director

State License # CMTL-0002
ISO Accreditation # ISO/IEC
17025:2017 Accreditation
PJLA-Testing 97164


Signature

10/04/19

Signed On



Certificate of Analysis

PASSED

 19000 SW 192 STREET
 MIAMI, FL, 33187, US
Telephone: 7865860672
Email: erick.ramirez@curaleaf.com

Sample : DA90927008-004
Harvest/LOT ID: TVF0926201901

Batch# :
 TVF0926201901
Sampled : 09/27/19
Ordered : 09/27/19

Sample Size Received : 7.0 gram
Total Weight/Volume : 2000 gram
Completed : 10/04/19 **Expires:** 10/04/20
Sample Method : SOP Client Method

Page 2 of 5



Terpenes

TESTED

Terpenes	LOD(%)	mg/g	%	Result (%)	Terpenes	LOD(%)	mg/g	%	Result (%)
ALPHA-CEDRENE	0.007	ND	ND		SABINENE	0.007	ND	ND	
ALPHA-HUMULENE	0.007	0.309	0.030		SABINENE HYDRATE	0.007	ND	ND	
ALPHA-PINENE	0.007	1.014	0.101		TERPINEOL	0.007	ND	ND	
ALPHA-TERPINENE	0.007	ND	ND		TERPINOLENE	0.007	4.491	0.449	
BETA-MYRCENE	0.007	17.100	1.710		TRANS-CARYOPHYLLENE	0.007	5.632	0.563	
BETA-PINENE	0.007	ND	ND		TRANS-NEROLIDOL	0.007	< 0.2	< 0.020	
BORNEOL	0.013	ND	ND		VALENCENE	0.007	ND	ND	
CAMPHENE	0.007	< 0.2	< 0.020						
CAMPHOR	0.013	ND	ND						
CARYOPHYLLENE OXIDE	0.007	< 0.2	< 0.020						
CEDROL	0.007	ND	ND						
ALPHA-BISABOLOL	0.007	1.875	0.187						
ISOPULEGOL	0.007	ND	ND						
CIS-NEROLIDOL	0.007	ND	ND						
3-CARENE	0.007	< 0.2	< 0.020						
FENCHYL ALCOHOL	0.007	ND	ND						
HEXAHYDROTHYMOL	0.007	ND	ND						
EUCALYPTOL	0.007	ND	ND						
ISOBORNEOL	0.007	ND	ND						
FARNESENE	0.007	ND	ND						
FENCHONE	0.007	ND	ND						
GAMMA-TERPINENE	0.007	ND	ND						
GERANIOL	0.007	ND	ND						
GERANYL ACETATE	0.007	ND	ND						
GUAJOL	0.007	< 0.2	< 0.020						
LIMONENE	0.007	4.716	0.471						
LINALOOL	0.007	ND	ND						
NEROL	0.007	ND	ND						
OCIMENE	0.007	ND	ND						
ALPHA-PHELLANDRENE	0.007	< 0.2	< 0.020						
PULEGONE	0.007	ND	ND						
Total (%)		3.513							



Terpenes

TESTED
Analyzed by 585 **Weight** 1.0174g **Extraction date** 09/27/19 05:09:00 **Extracted By** 585

Analysis Method -SOP.T.40.090
Analytical Batch -DA006724
Instrument Used :
Running On :
Batch Date :

Reagent	Dilution	Consums. ID
	10	

Terpenoid profile screening is performed using GC-MS with Liquid Injection (Gas Chromatography - Mass Spectrometer) which can screen 38 terpenes using Method SOP.T.40.091 Terpenoid Analysis Via GC/MS.



Certificate of Analysis

PASSED

 19000 SW 192 STREET
 MIAMI, FL, 33187, US
Telephone: 7865860672
Email: erick.ramirez@curaleaf.com

Sample : DA90927008-004
Harvest/LOT ID: TVF0926201901

Batch# :
 TVF0926201901
Sampled : 09/27/19
Ordered : 09/27/19

Sample Size Received : 7.0 gram
Total Weight/Volume : 2000 gram
Completed : 10/04/19 **Expires:** 10/04/20
Sample Method : SOP Client Method

Page 3 of 5



Pesticides

PASSED

Pesticides	LOD	Units	Action Level	Result	Pesticides	LOD	Units	Action Level	Result
DIMETHOATE	0.01	ppm	0.1	ND	TRANS-PERMETHRIN	0.05	ppm	1	ND
ABAMECTIN B1A	0.02	ppm	0.3	ND	PHOSMET	0.01	ppm	0.2	ND
CIS-PERMETHRIN	0.05	ppm	1	ND	PIPERONYL BUTOXIDE	0.01	ppm	3	ND
SPINETORAM (J)	0.01	PPM		ND	PRALLETHRIN	0.05	ppm	0.4	ND
SPINETORAM (L)	0.01	PPM		ND	PROPICONAZOLE	0.01	ppm	1	ND
ACEPHATE	0.001	ppm	3	ND	PROPOXUR	0.01	ppm	0.1	ND
DIMETHOMORPH	0.005	ppm	3	ND	PYRETHRIN I	0.01	ppm	1	ND
ETHOPROPHOS	0.01	ppm	0.1	ND	PYRIDABEN	0.01	ppm	3	ND
ACEQUINOCYL	0.01	ppm	2	ND	SPINOSAD (SPINOSYN A)	0.01	ppm	3	ND
ACETAMIPRID	0.01	ppm	3	ND	SPINOSAD (SPINOSYN D)	0.01	ppm	3	ND
ETOFENPROX	0.01	ppm	0.1	ND	SPIROMESIFEN	0.01	ppm	3	ND
ALDICARB	0.02	ppm	0.1	ND	SPIROTETRAMAT	0.02	ppm	3	ND
ETOXAZOLE	0.01	ppm	1.5	ND	SPIROXAMINE	0.01	ppm	0.1	ND
AZOXYSTROBIN	0.01	ppm	3	ND	TEBUCONAZOLE	0.01	ppm	1	ND
FENHEXAMID	0.01	ppm	3	ND	THIACLOPRID	0.01	ppm	0.1	ND
BIFENAZATE	0.01	ppm	3	ND	THIAMETHOXAM	0.01	ppm	1	ND
FENOXYCARB	0.01	ppm	0.1	ND	TRIFLOXYSTROBIN	0.01	ppm	3	ND
FENPYROXIMATE	0.01	ppm	2	ND					
BIFENTHRIN	0.01	ppm	0.5	ND					
CARBARYL	0.01	ppm	0.5	ND					
FIPRONIL	0.02	ppm	0.1	ND					
FLONICAMID	0.01	ppm	2	ND					
CARBOFURAN	0.01	ppm	0.1	ND					
CHLORANTRANILIPROLE	0.01	ppm	3	ND					
FLUDIOXONIL	0.01	ppm	3	ND					
HEXYTHIAZOX	0.01	ppm	2	ND					
CHLORFENAPYR	0.01	ppm	0.1	ND					
IMAZALIL	0.01	ppm	0.1	ND					
CHLORPYRIFOS	0.01	ppm	0.1	ND					
IMIDACLOPRID	0.01	ppm	3	ND					
CLOFENTEZINE	0.01	ppm	0.5	ND					
KRESOXIM-METHYL	0.01	ppm	1	ND					
COUMAPHOS	0.005	ppm	0.1	ND					
MALATHION	0.01	ppm	2	ND					
CYPERMETHRIN	0.01	ppm	1	ND					
DAMINOZIDE	0.01	ppm	0.1	ND					
METALAXYL	0.01	ppm	3	ND					
DICHLORVOS	0.05	ppm	0.1	ND					
METHIOCARB	0.01	ppm	0.1	ND					
METHOMYL	0.01	ppm	0.1	ND					
DIAZANON	0.01	ppm	0.2	ND					
MEVINPHOS	0.01	ppm	0.1	ND					
MYCLOBUTANIL	0.01	ppm	3	ND					
NALED	0.01	ppm	0.5	ND					
OXAMYL	0.01	ppm	0.5	ND					
PACLOBUTRAZOL	0.01	ppm	0.1	ND					



Pesticides

PASSED

Analyzed by 53	Weight 1.0103g	Extraction date 09/27/19 04:09:13	Extracted By 357
Analysis Method - SOP.T.30.065, SOP.T.40.065, SOP.T.40.066, SOP.T.40.070 , SOP.T.30.065, SOP.T.40.070 Analytical Batch - DA006734 Instrument Used : Running On :			
		Batch Date :	
Reagent	Dilution 10	Consums. ID	
Pesticide screen is performed using LC-MS and/or GC-MS which can screen down to below single digit ppb concentrations for regulated Pesticides. Currently we analyze for 67 Pesticides. (Method: SOP.T.30.060 Sample Preparation for Pesticides Analysis via LCMSMS and GCMSMS, SOP.T.40.065/SOP.T.40.066/SOP.T.40.070 Procedure for Pesticide Quantification Using LCMS and GCMS). * Volatile Pesticide screening is performed using GC-MS which can screen down to below single digit ppb concentrations for regulated Pesticides. Analytes marked with an asterisk were tested using GC-MS.			

This report shall not be reproduced, unless in its entirety, without written approval from Kaycha Labs. This report is an Kaycha Labs certification. The results relate only to the material or product analyzed. Test results are confidential unless explicitly waived otherwise. Void after 1 year from test end date. Cannabinoid content of batch material may vary depending on sampling error. IC=In-control QC parameter, NC=Non-controlled QC parameter, ND=Not Detected, NA=Not Analyzed, ppm=Parts Per Million, ppb=Parts Per Billion. Limit of Detection (LoD) and Limit Of Quantitation (LoQ) are terms used to describe the smallest concentration that can be reliably measured by an analytical procedure. RPD=Reproducibility of two measurements. Action Levels are State determined thresholds for human safety for consumption and/or inhalation. The result >99% are variable based on uncertainty of measurement (UM) for the analyte. The UM error is available from the lab upon request. The "Decision Rule" for the pass/fail does not include the UM. The limits are based on F.S. Rule 64-4.310.

Jorge Segredo
 Lab Director

 State License # CMTL-0002
 ISO Accreditation # ISO/IEC
 17025:2017 Accreditation
 PJLA-Testing 97164


 Signature

10/04/19

Signed On



Certificate of Analysis

PASSED

 19000 SW 192 STREET
 MIAMI, FL, 33187, US
Telephone: 7865860672
Email: erick.ramirez@curaleaf.com

Sample : DA90927008-004

Harvest/LOT ID: TVF0926201901

Batch# :

TVF0926201901

Sampled : 09/27/19

Ordered : 09/27/19

Sample Size Received : 7.0 gram

Total Weight/Volume : 2000 gram

Completed : 10/04/19 **Expires:** 10/04/20

Sample Method : SOP Client Method

Page 4 of 5

	Residual Solvents	PASSED
--	--------------------------	---------------

	Residual Solvents	PASSED
---	--------------------------	---------------

Solvent	LOD	Units	Action Level (PPM)	Pass/Fail	Result
1,2-DICHLOROETHANE	0.2	ppm	2	PASS	ND
1,1-DICHLOROETHENE	0.2	ppm	8	PASS	ND
2-ETHOXYETHANOL	9.6	ppm		PASS	ND
2-PROPANOL	140	ppm	500	PASS	ND
ACETONE	140	ppm	750	PASS	ND
ACETONITRILE	6	ppm	60	PASS	ND
BENZENE	0.1	ppm	1	PASS	ND
BUTANES (ISO-BUTANE)	50	ppm	2000	PASS	ND
BUTANES (N-BUTANE)	50	ppm	2000	PASS	ND
CHLOROFORM	0.2	ppm	2	PASS	ND
ETHANOL	140	ppm	5000	PASS	432.983
ETHYL ACETATE	140	ppm	400	PASS	ND
CYCLOHEXANE	232.8	ppm		PASS	ND
DICHLOROMETHANE	36	ppm		PASS	ND
ETHYL ETHER	140	ppm	500	PASS	ND
ETHYLENE OXIDE	0.5	ppm	5	PASS	ND
ETHYLBENZENE	130.2	ppm		PASS	ND
HEPTANE	140	ppm	500	PASS	ND
HEXANES (2,2-DIMETHYLBUTANE)	17.4	ppm	60	PASS	ND
HEXANES (2,3-DIMETHYLBUTANE)	17.4	ppm	60	PASS	ND
HEXANES (2-METHYLPENTANE)	17.4	ppm	60	PASS	ND
HEXANES (3-METHYLPENTANE)	17.4	ppm	60	PASS	ND
ISOPROPYL ACETATE	140	ppm		PASS	ND
METHYLENE CHLORIDE	1	ppm	125	PASS	ND
METHANOL	25	ppm	250	PASS	ND
N-HEXANE	17.4	ppm	60	PASS	ND
PENTANES (ISO-PENTANE)	140	ppm		PASS	ND
PENTANES (N-PENTANE)	50	ppm	750	PASS	ND
PENTANES (NEO-PENTANE)	50	ppm		PASS	ND
PROPANE	10	ppm	2100	PASS	ND
TETRAHYDROFURAN	43.2	ppm		PASS	ND
TOLUENE	15	ppm	150	PASS	ND
TOTAL XYLENES	1	ppm	150	PASS	ND
TRICHLOROETHYLENE	0.2	ppm	25	PASS	ND

Analyzed by	Weight	Extraction date	Extracted By
850	0.0240g	09/27/19 03:09:07	850

Analysis Method -SOP.T.40.032
Analytical Batch -DA006741
Instrument Used :
Running On :
Batch Date :

Reagent	Dilution	Consums. ID
	1	00268767 160861-1 24151941

Residual solvents screening is performed using GC-MS which can detect below single digit ppm concentrations. Currently we analyze for 21 Residual solvents.(Method: SOP.T.40.032 Residual Solvents Analysis via GC-MS).

This report shall not be reproduced, unless in its entirety, without written approval from Kaycha Labs. This report is an Kaycha Labs certification. The results relate only to the material or product analyzed. Test results are confidential unless explicitly waived otherwise. Void after 1 year from test end date. Cannabinoid content of batch material may vary depending on sampling error. IC=In-control QC parameter, NC=Non-controlled QC parameter, ND=Not Detected, NA=Not Analyzed, ppm=Parts Per Million, ppb=Parts Per Billion. Limit of Detection (LoD) and Limit Of Quantitation (LoQ) are terms used to describe the smallest concentration that can be reliably measured by an analytical procedure. RPD=Reproducibility of two measurements. Action Levels are State determined thresholds for human safety for consumption and/or inhalation. The result >99% are variable based on uncertainty of measurement (UM) for the analyte. The UM error is available from the lab upon request.The "Decision Rule" for the pass/fail does not include the UM. The limits are based on F.S. Rule 64-4.310.

Jorge Segredo
 Lab Director

 State License # CMTL-0002
 ISO Accreditation # ISO/IEC
 17025:2017 Accreditation
 PJLA-Testing 97164


 Signature

10/04/19

Signed On



Certificate of Analysis

PASSED

 19000 SW 192 STREET
 MIAMI, FL, 33187, US
Telephone: 7865860672
Email: erick.ramirez@curaleaf.com

Sample : DA90927008-004
Harvest/LOT ID: TVF0926201901

Batch# :
 TVF0926201901
Sampled : 09/27/19
Ordered : 09/27/19

Sample Size Received : 7.0 gram
Total Weight/Volume : 2000 gram
Completed : 10/04/19 **Expires:** 10/04/20
Sample Method : SOP Client Method

Page 5 of 5

	Microbials	PASSED
--	-------------------	---------------

Analyte	LOD	Result
ASPERGILLUS_TERREUS_1J2		not present in 1 gram.
ASPERGILLUS_NIGER		not present in 1 gram.
ASPERGILLUS_FUMIGATUS		not present in 1 gram.
ASPERGILLUS_FLAVUS		not present in 1 gram.
SALMONELLA_SPECIFIC_GENE		not present in 1 gram.
ESCHERICHIA_COLI_SHIGELLA_SPP		not present in 1 gram.

Analysis Method -SOP.T.40.043 / SOP.T.40.044 / SOP.T.40.041
Analytical Batch -DA006720 Batch Date :
Instrument Used :
Running On :

Analyzed by	Weight	Extraction date	Extracted By
513	1.0342g	09/27/19	513

Reagent	Consums. ID
092619.R06	A01 2803018 013 009A 019 009

Microbiological testing for Fungal and Bacterial Identification via Polymerase Chain Reaction (PCR) method consisting of sample DNA amplified via tandem Polymerase Chain Reaction (PCR) as a crude lysate which avoids purification. (Method SOP.T.40.043) If a pathogenic Escherichia Coli, Salmonella, Aspergillus fumigatus, Aspergillus flavus, Aspergillus niger, or Aspergillus terreus is detected in 1g of a sample, the sample fails the microbiological-impurity testing. Pour-plating is used for quantitation and confirmation, Total Yeast and Mold has an action limit of 100,000 CFU.

	Mycotoxins	PASSED
---	-------------------	---------------

Analyte	LOD	Units	Result	Action Level (PPM)
AFLATOXIN_G2	0.001	ppm	ND	0.02
AFLATOXIN_G1	0.001	ppm	ND	0.02
AFLATOXIN_B2	0.001	ppm	ND	0.02
AFLATOXIN_B1	0.001	ppm	ND	0.02
OCHRATOXIN_A	0.001	ppm	ND	0.02

Analysis Method -SOP.T.30.065, SOP.T.40.065
Analytical Batch -DA006735
Instrument Used :
Running On :
Batch Date :

Analyzed by	Weight	Extraction date	Extracted By
53	1g	NA	NA

Aflatoxins B1, B2, G1, G2, and Ochratoxins A testing using LC-MS. (Method: SOP.T.30.065 for Sample Preparation and SOP.T.40.065 Procedure for Mycotoxins Quantification Using LCMS. LOQ 1.0 ppb). Aflatoxin B1, B2, G1, and G2 must individually be <20ug/Kg. Ochratoxins must be <20ug/Kg.

	Heavy Metals	PASSED
---	---------------------	---------------

Dilution

50

Metal	LOD	Unit	Result	Action Level (PPM)
ARSENIC	0.0008369	ppm	ND	1.5
CADMIUM	0.0022201	ppm	ND	0.5
LEAD	0.0032903	ppm	ND	0.5
MERCURY	0.0028556	ppm	ND	3

Analyzed by	Weight	Extraction date	Extracted By
450	0.5202g	10/01/19 01:10:13	457

Analysis Method -SOP.T.40.050, SOP.T.30.052
Analytical Batch -DA006752
Instrument Used :
Running On :
Batch Date :

Heavy Metals screening is performed using ICP-MS (Inductively Coupled Plasma - Mass Spectrometer) which can screen down to below single digit ppb concentrations for regulated heavy metals using Method SOP.T.30.052 Sample Preparation for Heavy Metals Analysis via ICP-MS and SOP.T.40.050 Heavy Metals Analysis via ICP-MS.

This report shall not be reproduced, unless in its entirety, without written approval from Kaycha Labs. This report is an Kaycha Labs certification. The results relate only to the material or product analyzed. Test results are confidential unless explicitly waived otherwise. Void after 1 year from test end date. Cannabinoid content of batch material may vary depending on sampling error. IC=In-control QC parameter, NC=Non-controlled QC parameter, ND=Not Detected, NA=Not Analyzed, ppm=Parts Per Million, ppb=Parts Per Billion. Limit of Detection (LoD) and Limit Of Quantitation (LoQ) are terms used to describe the smallest concentration that can be reliably measured by an analytical procedure. RPD=Reproducibility of two measurements. Action Levels are State determined thresholds for human safety for consumption and/or inhalation. The result >99% are variable based on uncertainty of measurement (UM) for the analyte. The UM error is available from the lab upon request. The "Decision Rule" for the pass/fail does not include the UM. The limits are based on F.S. Rule 64-4.310.

Jorge Segredo
 Lab Director

 State License # CMTL-0002
 ISO Accreditation # ISO/IEC
 17025:2017 Accreditation
 PJLA-Testing 97164


 Signature

10/04/19

Signed On